

## Who is eligible?

To be eligible for the Autism Waiver, a person must:

- Live in Pennsylvania or plan to live in PA by time of enrollment
- Have a diagnosis of Autism Spectrum Disorder
- Be 21 years or older by time of enrollment
- Meet Medical Assistance financial eligibility
- Meet Intermediate Care Facility level of care  
IQ is NOT considered for eligibility

## What services can I receive?

- Assistive Technology
- Behavioral Specialist Services
- Community Inclusion
- Community Transition Services
- Counseling
- Day Habilitation
- Environmental Modifications
- Family Counseling
- Family Training
- Job Assessment and Finding
- Nutritional Consultation
- Occupational Therapy
- Residential Habilitation
- Respite
- Speech/Language Therapy
- Supported Employment
- Temporary Crisis
- Transitional Work Services

## How Do I apply For Services?

The Bureau of Autism Services is now accepting requests for applications to the Adult Autism Waiver. You can apply for the waiver even if you are on a waiting list or are currently receiving services. If you have questions or would like to request an application, please call :

**1-866-539-7689**

## AUTISM RESOURCES

[www.autism-society.org](http://www.autism-society.org)

[www.dpw.state.pa.us/autism](http://www.dpw.state.pa.us/autism)

[www.paautism.org](http://www.paautism.org)

[www.autismsupportpa.com](http://www.autismsupportpa.com)

### En Espanol:

[www.autismo.com](http://www.autismo.com)

[www.exploringautism.org/spanish](http://www.exploringautism.org/spanish)

It is the policy of Diversified Supportive Services to provide services to all persons without regard to race, color, national origin, religion, sex, sexual orientation, gender identity or expression, marital status, age or disability. No person shall be excluded from participation in, or be denied the benefits of, any service; or be subjected to discrimination because of race, color, national origin, religion, sex, sexual orientation, gender identity or expression, marital status, age or disability.

**1714 Memphis Street Suite C-8  
Phila, PA 19125**

**Phone: (215) 673-2778**

**Fax: (215) 673-3451**

**Website:**

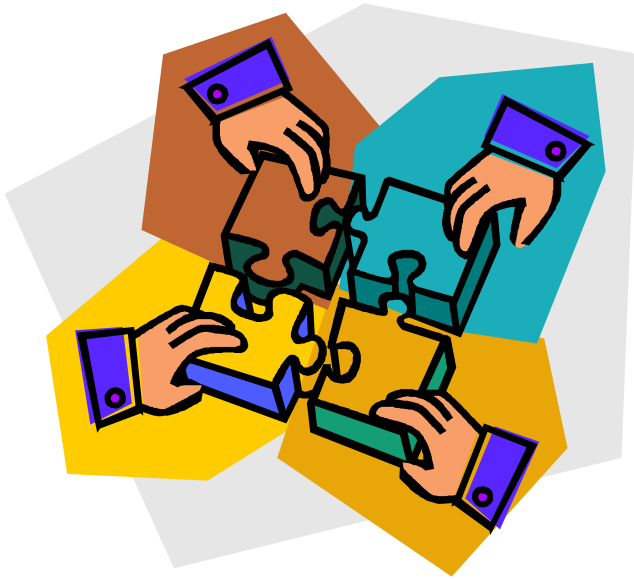
**[www.diversifiedsupportiveservices.org](http://www.diversifiedsupportiveservices.org)**



## Autism Supports Coordination



**“Changing DISabilities into  
POSSibilities!”**



## Mission Statement:

Our mission is to service and enhance the lives of individuals within the community. We aspire to achieve this goal by building a supportive network between individuals, their families and their community.

It has been proven that by working as a team; to put the pieces of the puzzle together, we can encourage independence, skill building and personal development.

As always, It is in our greatest interest to help our families obtain the supports they are entitled to thus, these tools become the vehicle of success in meeting the needs of the individuals we serve.

- **Information regarding the Autism Waiver can be found on the DHS Bureau of Autism Services website.**

<http://www.DHS.state.pa.us/ServicesPrograms/Autism/>

# Autism Supports Coordination Services

## What Is Supports Coordination?\*

Supports Coordination is made up of four major parts:

**Assessments:** Every year before developing the Individual Support Plan (ISP), the Supports Coordinator will ask the participant and/or family members to complete three tests—the Scales of Independent Behavior-Revised (SIB-R), the Parental Stress Scale (PSS) (if the participant lives with family members) and the Quality of Life Questionnaire (QOL.Q).

**Individual Support Plan (ISP):** the Supports Coordinator must call a meeting of the Planning Team to create the participant's Support Plan. The team is made up of the Supports Coordinator, the Participant getting services and other individuals chosen by the Participant. A participant may ask current service providers (Behavior Support Specialist, etc.) to attend the Planning Team meeting. The services in the ISP should be based on the participant's goals and needs

**Monitoring:** the Supports Coordinator should visit or call the participant or his or her family at least once every month. They have to visit the participant either at home or outside of home while they are getting services, at least once every three months. During those visits or calls, the Supports Coordinator will check to see that the participant is receiving the services in his/her plan and ensure service delivery is in accordance with goals developed in the Individual Support Plan.

**Coordination of non-waiver services:** the Supports Coordinator also assists the participant find and access services that they may need that are not part of the Adult Autism Waiver. Some of those services include but are not limited to: finding a doctor and/or dentist, applying for job training and finding services offered by the participant's community.

## Philosophy:

DSS is committed to servicing individuals and their families by providing quality support services. We are dedicated to constantly improving living situations and enhancing the lives of families with members who are diagnosed with Autism. We believe in helping individuals and their families achieve healthy and productive lifestyles. To accomplish this, we work with individuals, their families, and service providers to develop a functional support system.

## Why Diversified Supportive Services?

DSS realizes that locating services can be a time consuming as well as frustrating task. Our job is to locate, coordinate and monitor support services that meet your family's needs. Our staff is comprised of experienced supports coordinators. They participate in annual trainings to acquire new skills as well as resources to pass on to our families.

The Supports Coordinator will conduct re-evaluations annually; however, services can be changed based on need. Each waiver consumer will have an Individualized Service Plan (ISP). Consumers may choose the provider for each service in their Individual Service Plan.

All written materials will be produced in both English and Spanish (if applicable). Translation services are available for persons with limited English proficiency.

We are available to answer your questions as well as facilitate meetings that require team collaboration.

Our goal is to give you access to the services and supports you need. At DSS, we strive to give you more than just great service, we want to give you peace of mind!